



Component Replacement

- electrical -



G705



CONTENTS

1	Replaceable Components	3
2	Component Placing.....	5
3	Repair Actions	6
3.1	Shield Can Fence Modifications	6
3.2	Additional Repair Info	7
4	Revision History	11

*For general information about electrical repair related issues, refer to
1220-1336: Generic Repair Manual - electrical*



1 Replaceable Components

EXPLANATION OF ABBREVIATIONS USED IN THE COLUMN 'COMMENTS' BELOW

COMPONENT LOCATION

A = Side A

B = Side B

REPAIR METHOD

HA = Hot Air (removal & mounting)

HA/ST = Hot Air for removal - Soldering Tool for mounting

BGA = BGA Station

ADDITIONAL INFORMATION

⇒1 (2,3,4, etc.) = Proceed to 'Additional Repair Info' for further instructions in the indicated section(s).

CALIBRATION

C = Calibration of the phone is required after replacing the component

Calibration to be done by authorized centers only!

Position	Designation	Part no.	Comments
B1400	Osc TCXO 27,456 MHz	1200-7847	A HA
B2000	Vibrator	1202-9271	B HA/ST ⇒1
B2100	Crystal 32,768 kHz	RTM501911/2R1A	A HA C
B3100	Microphone	1210-7410	A BGA
B4410	IC	RYN901920/1	A HA ⇒2
C2214	Capacitor Electrolytic 70.0 mF None 3.3 V	1203-3900	A HA
E1003	Shield Can Fence	1206-8594	A HA
L2200	Ind WW 4.7 uH K3012	1200-2214	A HA
L2201	120ohm 0603 2A 50mohm Bead	REG70605/15	A HA ⇒3
L2401	Inductor 0.0 H ±25%	REG70618/20	B HA ⇒4
L2402	Inductor 0.0 H ±25%	REG70618/20	B HA ⇒4
L2403	Inductor 0.0 H ±25%	REG70618/20	B HA ⇒4
L2404	Inductor 0.0 H ±25%	REG70618/20	B HA ⇒4
L2405	Inductor 0.0 H ±25%	REG70618/20	B HA ⇒5
L2406	Ind Chip 0, H	1200-6898	B HA ⇒4
L2408	Inductor 0.0 H ±25%	REG70618/20	B HA ⇒5
L2452	220ohm 0603 2A 0.05ohm Bead	REG70605/24	A HA ⇒3
L4200	22uH 20% 3x3x1.2mm 0.375A 0.63ohm	REG7245512/22M	A HA
N1210	IC Lin WLP-16	1203-5870	A HA
N1211	IC Vreg PLP1820-6	1204-5903	A HA
N1300	Module Bluetooth + FM WFBGA100	1200-9840	B BGA
N1400	A-GPS	1200-0700	A HA
N1410	IC Amp P-TSLP-1-1	1200-2407	A HA
N1510	Mod Radio WLAN R041	1200-6173	B HA
N2200	IC Vreg SC70	1200-6420	A HA
N2201	IC Vreg PLP1010-4	1201-6465	A HA ⇒6
N2203	IC Vreg	RYT113997/4	B HA ⇒7
N2204	IC	RYT1137816/4	B HA ⇒7
N2300	ASIC PM WLAN PMU	1203-2790	A HA



Component Replacement Repair Drawing Electrical/Component Replacement, Electrical/

Position	Designation	Part no.	Comments
N2401	Trans N-ch FET	RYN901936/1	A HA
N2411	ASIC Accelerometer	1202-1676	A HA ⇒8
N2420	IC IF 3.5X3.5X0.8	1200-1694	A HA
N2421	IC ESD Prot UDFN 6 2x2 mm	1200-6309	A HA ⇒3
N2422	ASIC BB Elina	1201-4120	A HA
N3100	IC CS-9	1200-9978	A HA
N3101	ASIC Tjatte3 CSP20	ROP1013074/1R1A	A HA ⇒3
R2449	Resistor 0, Ohm +/-50m 63 mW K0603	REP623001/0	B HA ⇒4
R2451	Resistor 0.0 Ohm +/-5% NA mW K0402	REP622001/0	B HA ⇒4
R2490	Resistor 0, Ohm +/-50m 63 mW K0603	REP623001/0	B HA ⇒4
S2403	Input Switch side push	RMD10116/9R1A	A HA/ST
S2404	Input Switch Side Push	1206-9606	B HA/ST
S2405	Input Switch side push	RMD10116/9R1A	A HA/ST
S2406	Input Switch side push	RMD10116/9R1A	A HA/ST
V2200	Diode Protection 0,	RKZ223911/1	B HA ⇒9
V2202	Trans P-ch FET	RYN122910/1	A HA
V2415	Diode Protection 5, V SOD-923	1201-8440	A HA ⇒3
V2416	Diode Protection 5, V SOD-923	1201-8440	A HA ⇒3
V2417	Diode Protection 12, V SOD523	1200-5130	B HA ⇒5
V2470	Diode 0,	RKZ323916/1	A HA ⇒10
V3101	Zenner Diode, ESD protection, 6.1V	RKZ223922/1	A HA ⇒11
V4203	Trans NPN	1211-3641	A HA
X1000	Conn Leaf Spring	1201-4841	A HA/ST
X1001	Conn Leaf Spring 1p	1202-1053	A HA/ST ⇒12
X1002	Conn Leaf Spring	1201-4841	A HA/ST ⇒13
X1003	Conn Leaf Spring	1201-4841	A HA/ST
X1004	Conn Leaf Spring 1p	1202-1053	A HA/ST ⇒14
X1005	Conn Leaf Spring	1201-4841	A HA/ST ⇒2
X1200	Conn Coax Plug 6p RF-probe contact	1203-9688	A HA/ST ⇒15
X1500	Conn Coax Plug 6p RF-probe contact	1203-9688	A HA/ST ⇒3
X2201	Conn Pogopin 5p	1206-2937	B BGA
X2401	Conn BtB Receptacle 16p	1214-7370	A HA
X2402	Conn BtB	1200-9864	B HA ⇒16
X2403	Card Conn	RNK87147/2	A BGA
X2405	System connector	1205-9723	B HA/ST
X3102	Conn WtB Receptacle 2p	1206-4855	B HA
X4200	Conn BtB Receptacle 70p	1206-2940	A BGA
X4300	Conn Camera Socket 0p	1206-5418	B HA/SI
Z2400	Filter 100, MHz K1210	1201-6833	A HA ⇒3
Z4200	Filter 400.0 MHz KNA16400 – W5 1608 (1.6x0.8x0.5mm)	REV50146/1	A HA ⇒8
Z4201	Filter 400.0 MHz KNA16400 – W5 1608 (1.6x0.8x0.5mm)	REV50146/1	A HA ⇒8
Z4202	Filter 400.0 MHz KNA16400 – W5 1608 (1.6x0.8x0.5mm)	REV50146/1	A HA ⇒8
N1200	Tiger 1,8	1218-1880	A BGA C



2 Component Placing

To access the Component Placing document, double-click the icon below.





3 Repair Actions

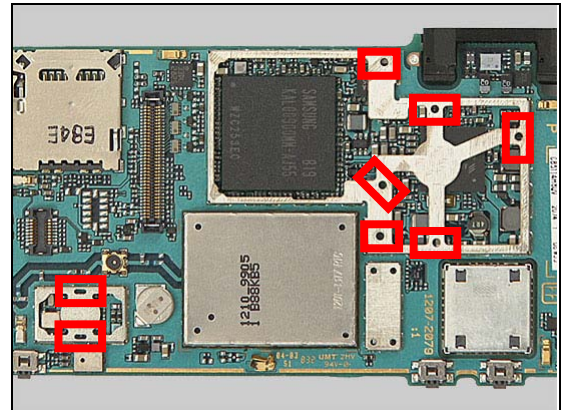
Refer to the Tools Catalogue and/or Tools Matrix for information about equipment that is required for PBA repair!

3.1 Shield Can Fence Modifications

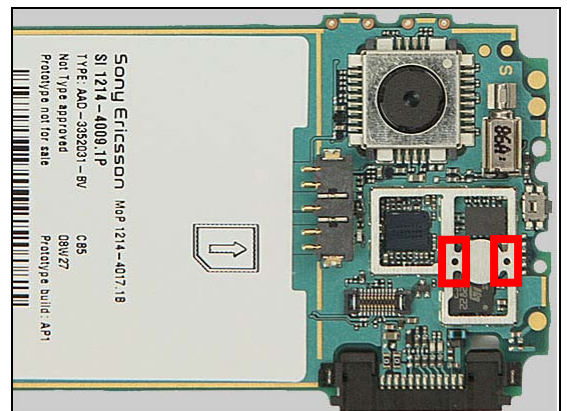
Refer to the pictures below of the primary and secondary sides for repairs that require the Shield Can Fence to be modified:

- the shield can lid has to be removed
- the red symbols show where the frame should be cut to enable rework
- after rework the height of the frame should not be affected
- it should not be visible that rework has been carried out when the lid has been mounted

Side A



Side B





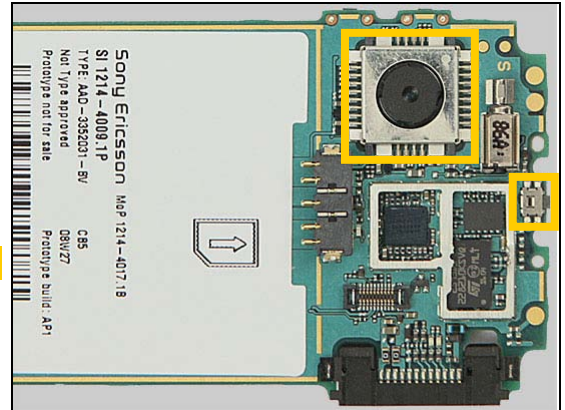
Repair Actions

3.2 Additional Repair Info

1

B2000

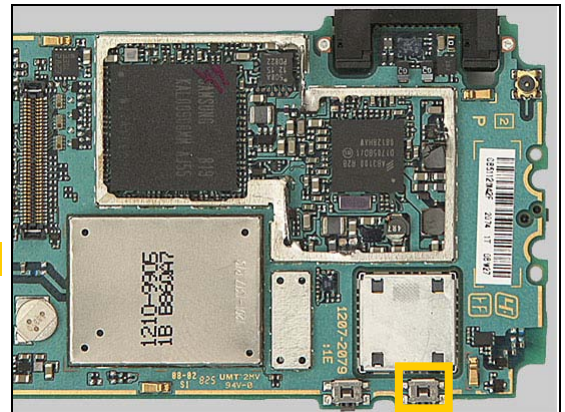
Protect the camera and the switch with capton tape!



2

B4410, X1005

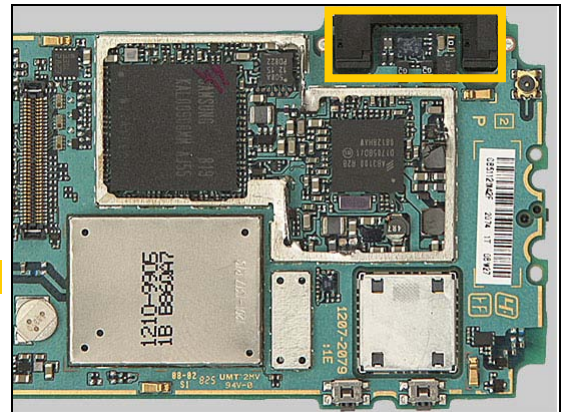
Protect the switch with capton tape!



3

L2201, L2452, N2421, N3101, V2415, V2416, X1500, Z2400

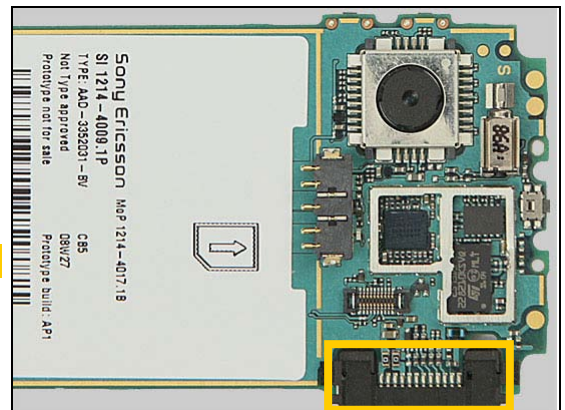
Protect the system connector with capton tape!



4

L2401-2404, L2406, R2449, R2451, R2490

Protect the system connector with capton tape!

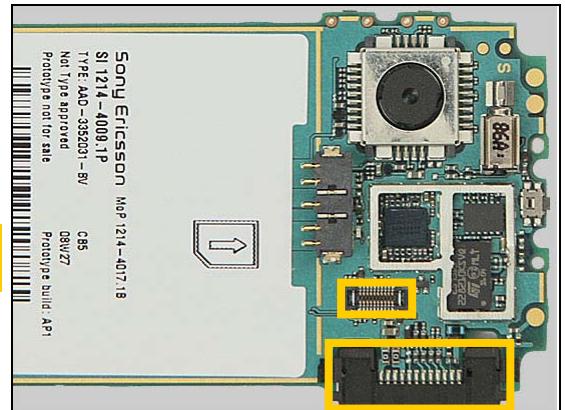


Repair Actions: Additional Repair Info

5

L2405, L2408, V2417

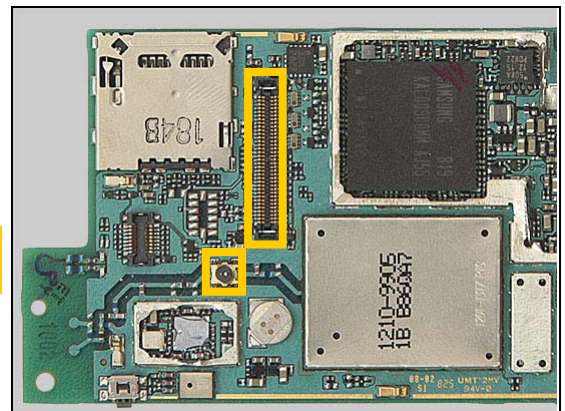
Protect the BtB connector and system connector with capton tape!



6

N2201

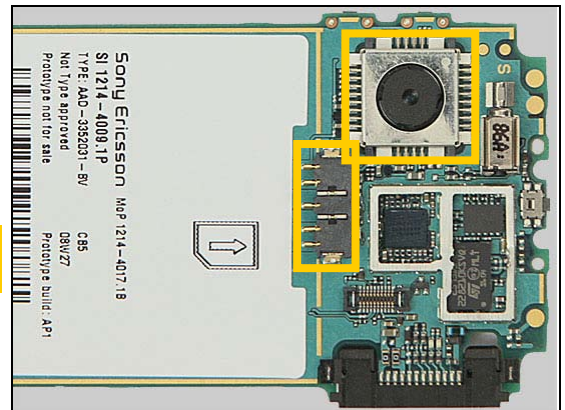
Protect the coax connector and BtB connector with capton tape!



7

N2203, N2204

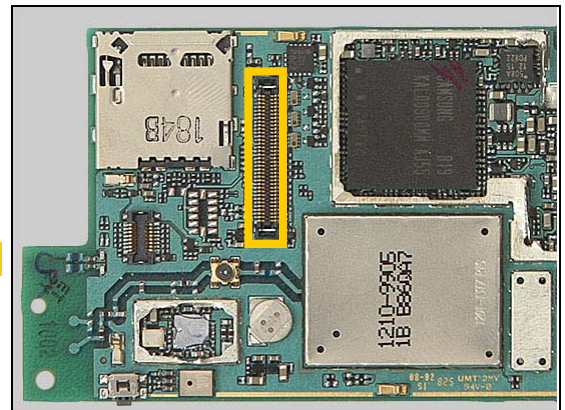
Protect the battery connector and camera with capton tape!



8

N2411, Z4200-Z4202

Protect the BtB connector with capton tape!



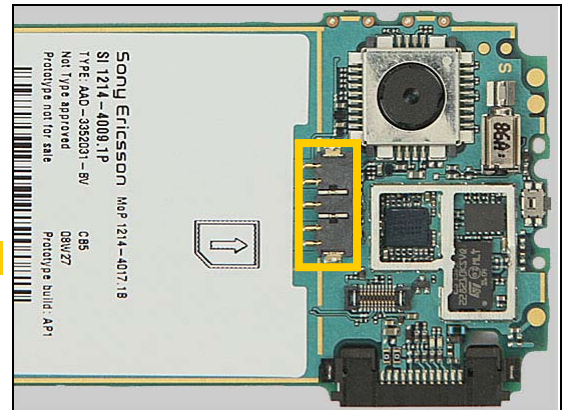


Repair Actions: Additional Repair Info

9

V2200

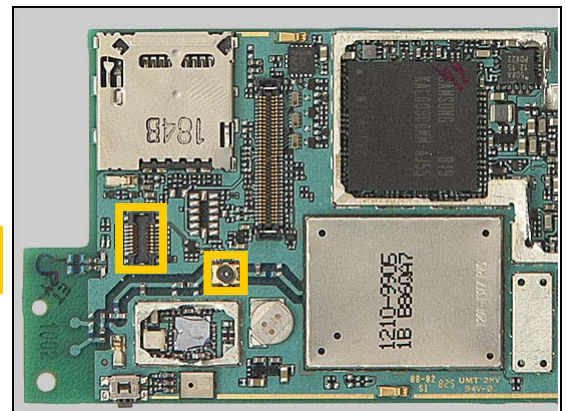
Protect the battery connector with capton tape!



10

V2470

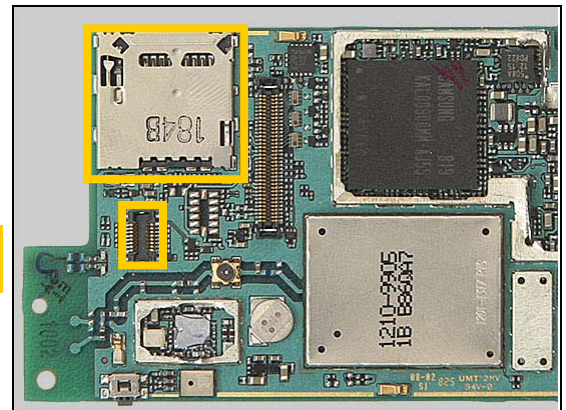
Protect the BtB connector and coax connector with capton tape!



11

V3101

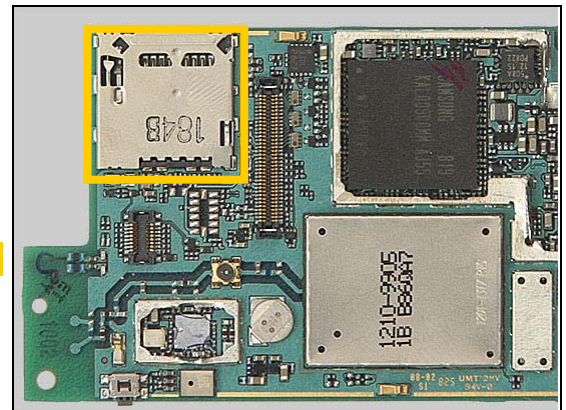
Protect the memory card holder and BtB connector with capton tape!



12

X1001

Protect the memory card holder with capton tape!



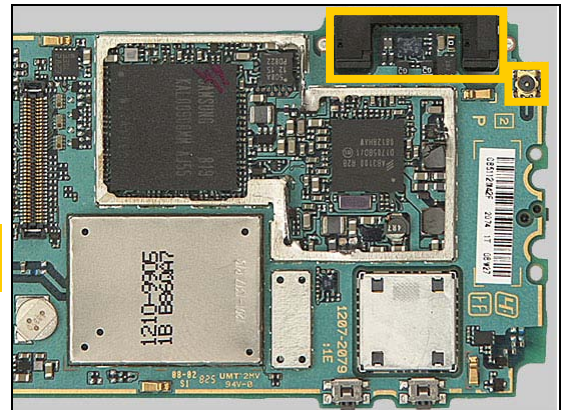


Repair Actions: Additional Repair Info

13

X1002

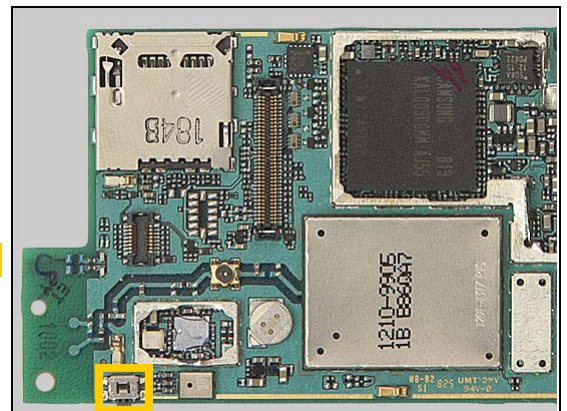
Protect the system connector and the coax connector with capton tape!



14

X1004

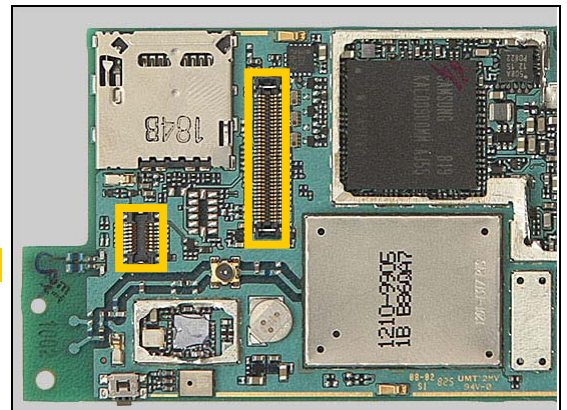
Protect the switch with capton tape!



15

X1200

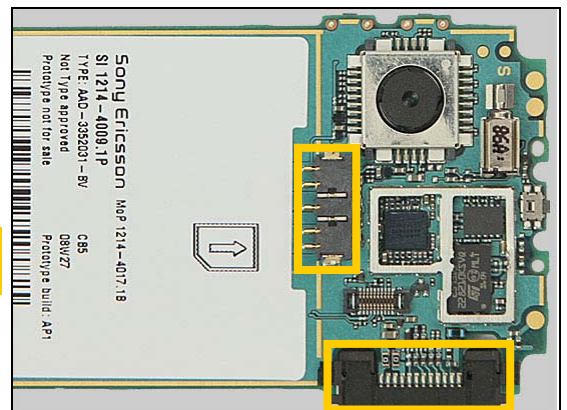
Protect the two BtB connectors with capton tape!



16

X2402

Protect the battery connector and system connector with capton tape!





4 Revision History

Rev.	Date	Changes / Comments
1	2008-Nov-06	Initial release
2	2009-Jan-21	Added Tiger 1,8
3	2010-03-18	Added N3100